

CERTIFICATE OF LOCATION OF GOVERNMENT CORNER

NORTHEAST Corner of Section 4, Township 108, Range 43, 5TH P.M.

STATE OF MINNESOTA, County of MURRAY

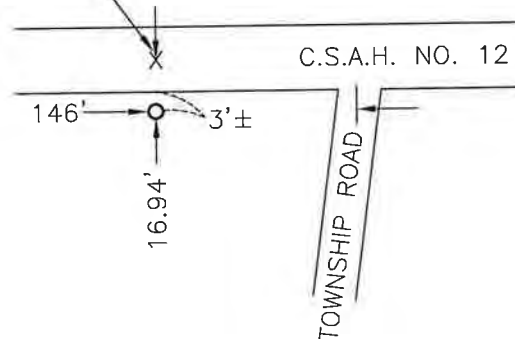
At the corner location shown on the sketch:

- On _____ found a _____
DATE
- left monument as found, lowered monument, removed monument (explain)
- On 11-02-2012 placed a 5/8" iron with seal #43844.
DATE

SKETCH OF REFERENCE TIES



CLOSING CORNER
ESTABLISHED IN ϕ OF ROAD



Minnesota State Plane Coordinate
System Murray County Datum
NAD83 (1996)

N: 227124.667
E: 437800.679

Corner is 16.94' south of centerline of C.S.A.H. No. 12
Corner is 146' west of centerline of township road.

Statement of evidence relative to this corner location is on back of page.

I hereby certify that this document and the data contained herein was prepared by me or under my direct supervision.


SIGNATURE 2/18/13
DATE

Registration No. 43844

- Land Surveyor, Professional Engineer
- County Surveyor, County Engineer

OFFICE OF THE COUNTY RECORDER
County of

I hereby certify that this document was filed in the Co. Recorders office at _____ .M on the _____ day of MAY 23 2013 A.D. 20 _____

County Recorder James V. Johnson
By _____, Deputy

DOCUMENT NO. _____

Statement of Evidence

In 1858, W. J. Neely surveyed the south line of the township to the north (Standard Parallel).

In 1866, J. W. Bishop did the original subdivision of the township.

In 1926, the corner was set by the Murray County Surveyor at the request of both counties for the creation of a judicial road.

On July 19, 1927, the Lyon County Surveyor found a stone at the corner and set ties to it.

In 1984, plans for County State Aid Highway No. 12 show a pipe at the corner. It shows the pipe in the center of the road and gives stationing to the SE and S $\frac{1}{4}$ corners of Section 34-109-43.

On November 2, 2012, Bueltel-Moseng Land Surveying set a $\frac{5}{8}$ " iron with seal #43844 at the corner. We set it at the recorded stationing from the SE corner of Section 34-109-43 and on the Standard Parallel line. It fell 3' south of the south edge of the road, and 146' west of the center of the township road. We established the closing corner as being in the center of the road and the recorded distance from the SE corner using the highway plans. The closing corner is 16.94 feet north of the Northeast corner of Section 4-108-43. We did not dig. In 1984, a total grading project was done on the judicial road.